



# GAT MONTHLY MEMBERSHIP PROGRESS REPORT

Results as of: 5/31/2023

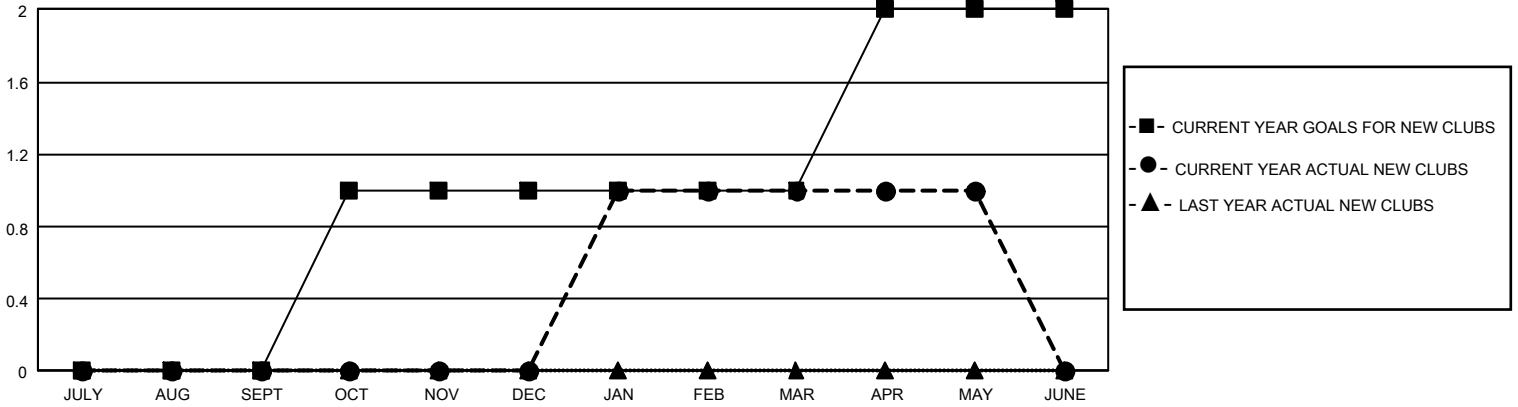
## GMT Constitutional Area 2, Group A

REPORT DOES NOT INCLUDE CLUBS IN UNDISTRICTED AREAS.

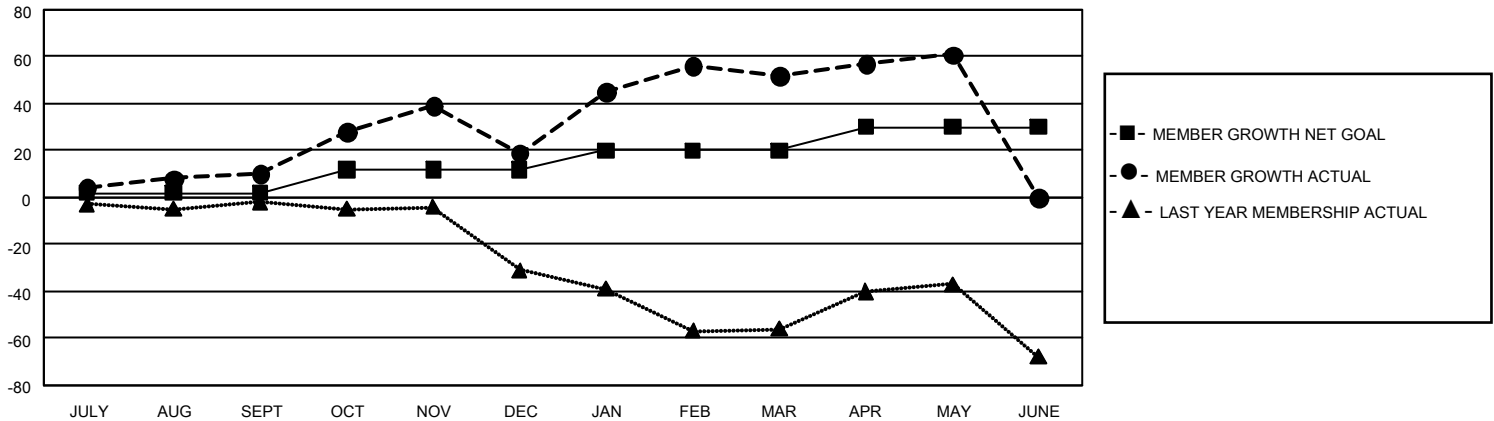
Clubs			
RESULTS FOR 2022-2023			
QUARTER	NEW CLUB GOAL	NEW CLUBS	DROPPED CLUBS
JULY/AUG/SEPT	0	0	0
OCT/NOV/DEC	3	0	1
JAN/FEB/MAR	0	1	0
APR/MAY/JUNE	3	0	0

Members			
RESULTS FOR 2022-2023			
QUARTER	MEMBER GROWTH NET GOAL	MEMBER GROWTH ACTUAL	DROPPED MEMBERS ACTUAL (including transfers)
JULY/AUG/SEPT	2	35	24
OCT/NOV/DEC	10	39	30
JAN/FEB/MAR	8	52	15
APR/MAY/JUNE	10	16	6

GOALS AND ACTUAL NEW CLUBS CUMULATIVE



GOALS AND ACTUAL MEMBERS CUMULATIVE



DROPPED CLUBS: 1	27 CLUBS OF 47 ADDED 1 OR MORE NEW MEMBERS	<u>GENDER DISTRIBUTION</u>	
		MALE	515 (52.98%)
<u>DROPPED MEMBERS</u>		FEMALE	456 (46.91%)
		NON BINARY	0 (0.00%)
DECEASED	3	PREFER NOT TO ANSWER	1 (0.10%)
CLUB CANCELLED	13	TOTAL FAMILY UNIT MEMBERS	72
OTHER	59	FAMILY MEMBERS PAYING HALF DUES	37
<b>TOTAL</b>	<b>75</b>		

[CLICK HERE FOR CUMULATIVE MEMBERSHIP DATA](#)